

# essentia<sup>®</sup>

## MDU Solutions

Efficient and effective Multi-Dwelling Unit solutions to help you scale your network reach and grow your subscriber base.



A turnkey approach to MDU design, engineering and deployment. Complete project management oversight and reporting enabling our customers to focus on growing their business.

### Fiber in the MDU Environment



#### Network Boundary

Marks the perimeter to ensure seamless network coverage.



#### Floor Connectivity

Riser cables connect to terminals on each floor, ensuring smooth transitions.



#### Basement Hub

Houses a dedicated splitter cabinet, facilitating efficient distribution.



#### Unit Connectivity

Fiber cables extend through hallways or connect directly to a cabinet/splitter terminal, optimizing access.

### Types of multi-dwelling units (MDU)



#### Low-Rise

**Optimize** connectivity leveraging low-fiber-count feeder cables and small-form-factor splitter terminals for seamless direct drops to subscribers.



#### Mid-Rise

**Transform** the connectivity landscape utilizing centralized fiber access points to deliver reliable connectivity to every corner of the building.



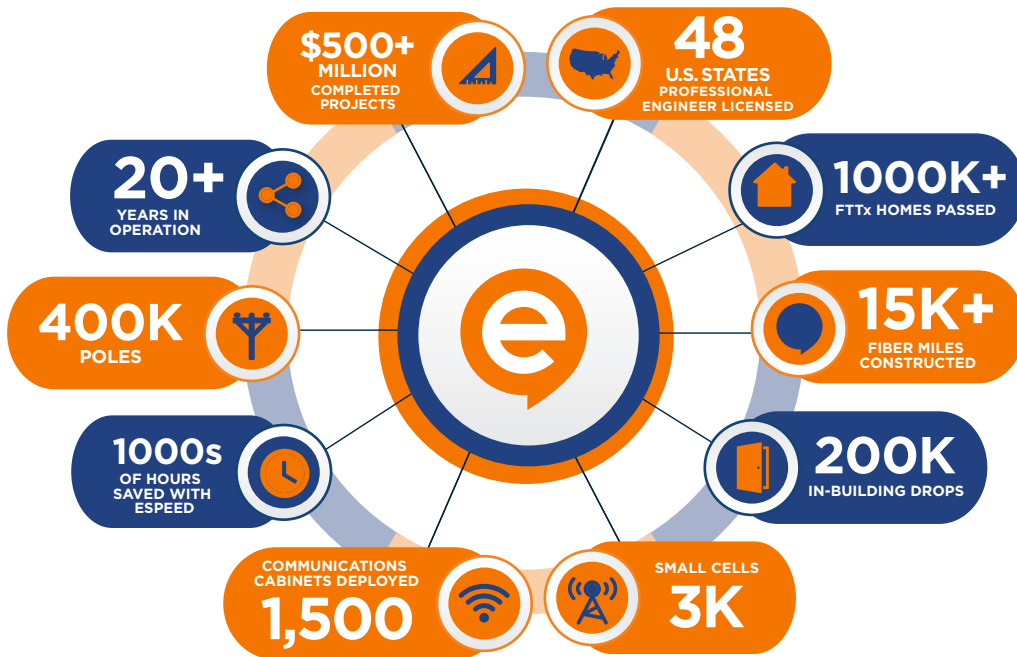
#### High-Rise

**Achieve** quick and efficient riser-to-basement installation with our compact, fully preconnectorized solutions.

Trust us to deliver efficient, reliable, and innovative **solutions to grow your business.**

# About **e**ssentia<sup>®</sup>

**We are the Experts You Trust to Deliver First —**  
designing and building turnkey outdoor & indoor networks with unrivaled quality and record-setting cycle times for Hyperscalers, Fiber Operators, Telecom, Cable & beyond.



**+** **ADDITIONAL PROJECT WORK:** DAS / Private Networks, Turnkey Headends, Hub Sites, Data Centers, Stadiums, Monopole Installations, structured cabling, enterprise solutions & fixed wireless

“The company has excelled at building the trust, speed, and expertise for being the go-to-entity for full-fledged fiber installations.”

— **TELECOM TECH OUTLOOK**

“Go to vendor nationally for our largest, hardest, and most complex projects.”

— **NATIONAL DIRECTOR, FORTUNE 200 TELCOM**

**e**speed  
Faster Timelines  
Better Visibility  
Smarter!

- Project Management
- Document Management
- Project Financials (EV Analysis)
- Project Closeout
- Automated Reports & Dashboards

Essentia's  
**3 Uniques**



**Speed:** Accelerated timelines means speed to revenue!

**Trust:** Proven solutions with a track record of reliability.

**Expertise:** Industry-recognized expertise in engineering and construction.