



# Empowering Hyperscalers and Data Centers to Lead the AI Revolution

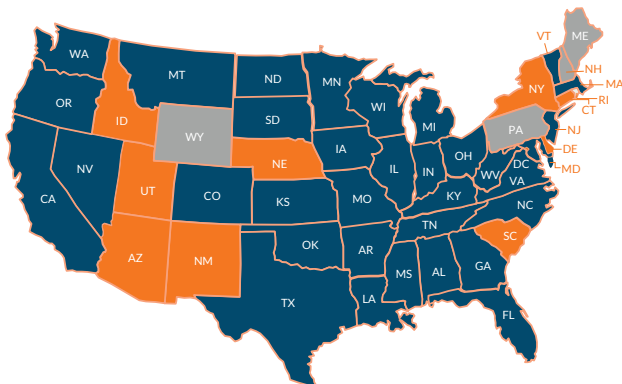
Build scalable, future-proof networks designed for the demands of AI.

## A Trusted Partner for Hyperscalers

Essentia supports hyperscaler network deployment strategies with comprehensive nationwide fiber solutions. Our expertise includes feasibility, engineering, permitting, end-to-end construction, a tech-enabled platform for streamlined project management, and innovative IRU financing and co-build models to optimize deployment timelines and minimize operational overhead.

## Why Hyperscalers and Data Center Leaders Choose Essentia

**End-to-End Fiber Expertise:** Seamless design, construction, and maintenance of future-ready networks built to support massive AI workloads and exponential data growth.



● CLEC Licensed ● In Process

- Innovative IRU Financing:** Off balance-sheet solutions to provide long-term network access while maximizing capital efficiency.
- Agile and Scalable Solutions:** Adaptable networks designed to evolve with your demands, ensuring rapid scaling and unmatched precision.
- Trusted Infrastructure Partner:** High-capacity, resilient networks that deliver uptime, reliability,

## What Essentia Offers

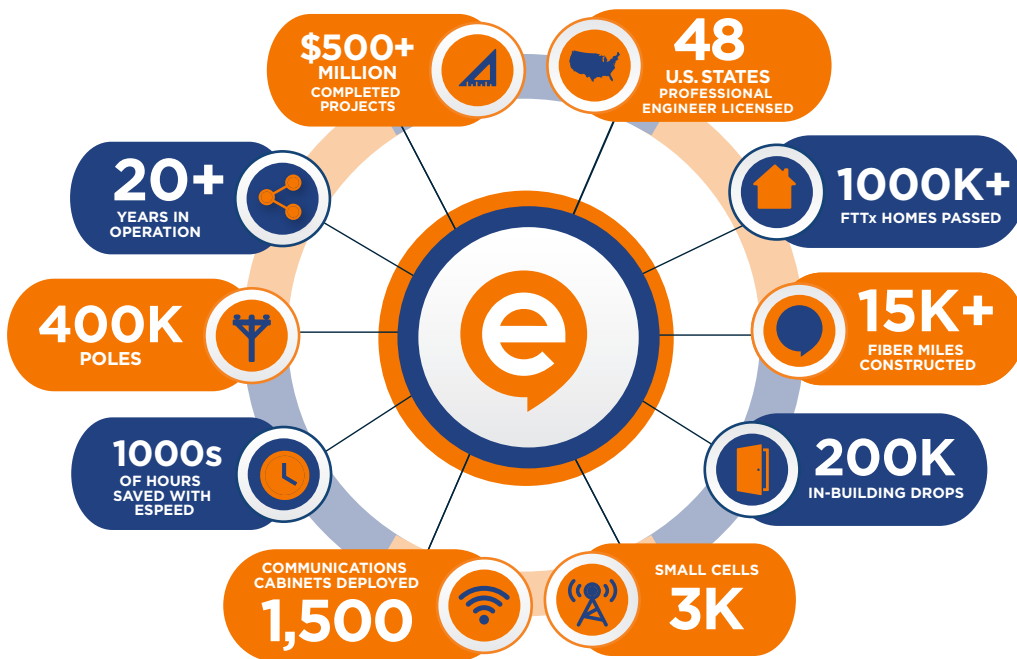
<b>FEASIBILITY DUE DILIGENCE</b>	<b>INFRASTRUCTURE PLANNING</b>	<b>NETWORK ASSESSMENT</b>	<b>FIBER DESIGN &amp; ENGINEERING</b>	<b>CONSTRUCTION/ PATH CREATION</b>	<b>OPERATIONS &amp; MAINTENANCE</b>

Let's Build a Scalable Future Together!

Reach out to schedule a consultation at [solutions@essentia-inc.com](mailto:solutions@essentia-inc.com)

# About

**We are the Experts You Trust to Deliver First —** designing and building turnkey outdoor & indoor networks with unrivaled quality and record-setting cycle times for Hyperscalers, Fiber Operators, Telecom, Cable & beyond.



**+** **ADDITIONAL PROJECT WORK:** DAS / Private Networks, Turnkey Headends, Hub Sites, Data Centers, Stadiums, Monopole Installations, structured cabling, enterprise solutions & fixed wireless

“The company has excelled at building the trust, speed, and expertise for being the go-to-entity for full-fledged fiber installations.”

— TELECOM TECH OUTLOOK

“Go to vendor nationally for our largest, hardest, and most complex projects.”

— NATIONAL DIRECTOR, FORTUNE 200 TELCOM

**espeed**  
Faster Timelines  
Better Visibility  
Smarter!

-  Project Management
-  Document Management
-  Project Financials (EV Analysis)
-  Project Closeout
-  Automated Reports & Dashboards

### Essentia's 3 Uniques



**Speed:** Accelerated timelines means speed to revenue!

**Trust:** Proven solutions with a track record of reliability.

**Expertise:** Industry-recognized expertise in engineering and construction.